

Building Partnerships & Expertise in Sexual Violence Prevention

Towards A Coordinated Approach with Campuses and Rape Crisis Centers

Robyn Wiktorski-Reynolds, Crisis Services of Buffalo
Caitlin Powalski, Crisis Services of Buffalo
Christi Waldron, RESTORE Sexual Assault Services of Rochester
Carrie Moylan, Binghamton University

SUNY Personal Safety Committee Conference
June 3, 2015

Today's Objectives

- ▶ Discuss Regional Sexual Violence Prevention Center NYSDOH grant.
- ▶ Identify the role Rape Crisis Centers (RCC) can play in supporting campus prevention of and response to sexual violence.
- ▶ Compare partnerships between RCC and current campus partners.
- ▶ Recommend next steps to building partnerships with RCCs.

What is a Rape Crisis Center?

- ▶ **Crisis intervention**
- ▶ **24/7 response Hospital Advocate-** *NYS Department of Health Protocol indicates that a victim of a sexual assault is to be offered the services of the rape crisis center in the emergency department.*
- ▶ **Certified Rape Crisis Counselors**
- ▶ 24 hour **hotline** access
- ▶ Short term **counseling/therapy** and/or support group
- ▶ Advocacy and support through **medical** exams and treatment
- ▶ Advocacy and support during interactions with **law enforcement**
- ▶ **Court advocacy** and accompaniment
- ▶ **Prevention, outreach and education**
- ▶ Office of Victim Services (**OVS**) Claims

Trauma Informed Care

- ▶ The experience of violence and victimization including sexual abuse, physical abuse, severe neglect, loss, domestic violence and/or the witnessing of violence, terrorism or disasters (NASMHPD, 2006)



Crisis Services

Crisis Services is dedicated to promoting the health, safety and well being of the community through prevention, education, immediate intervention and access to community wide resources 24 hours a day.

24 Hour Crisis Counseling Program

Homeless Program

Advocate Program

Emergency Mental Health Response Services



The Advocate Program



THE ADVOCATE PROGRAM

The Advocate Program is committed to empowering survivors of domestic/family/sexual violence and elder abuse without discrimination.

We strive to reduce the impact of violence and build a safer community.



The Advocate Program

- ▶ 1968 Agency was established
- ▶ 1978 Advocate Program - rape crisis response
- ▶ 1983 DOH designation as Rape Crisis Center
- ▶ 1995 Domestic violence services
- ▶ 1999 Elder abuse services
- ▶ 2002 Rape Crisis Advisory Committee
- ▶ 2003 SAFE (Sexual Assault Forensic/Nurse Examiner) Program
- ▶ 2010 NYS Domestic and Sexual Violence Hotline
- ▶ 2012 Domestic Violence Helpline in Erie County
- ▶ 2014 Sexual Violence Prevention Regional Grant (NYS HRI/DOH)

 @Crisis_Services

 /CrisisServices



@CrisisServices

YWCA of Niagara

- ▶ Established 1915
- ▶ Eliminate racism and empower women.
- ▶ In 1996, became the county-wide provider of services to women and girls.
- ▶ 2009, the YWCA of Niagara became the certified NYS DOH Rape Crisis Center for Niagara County



 @YWCAofNiagara

 /YWCAofNiagara

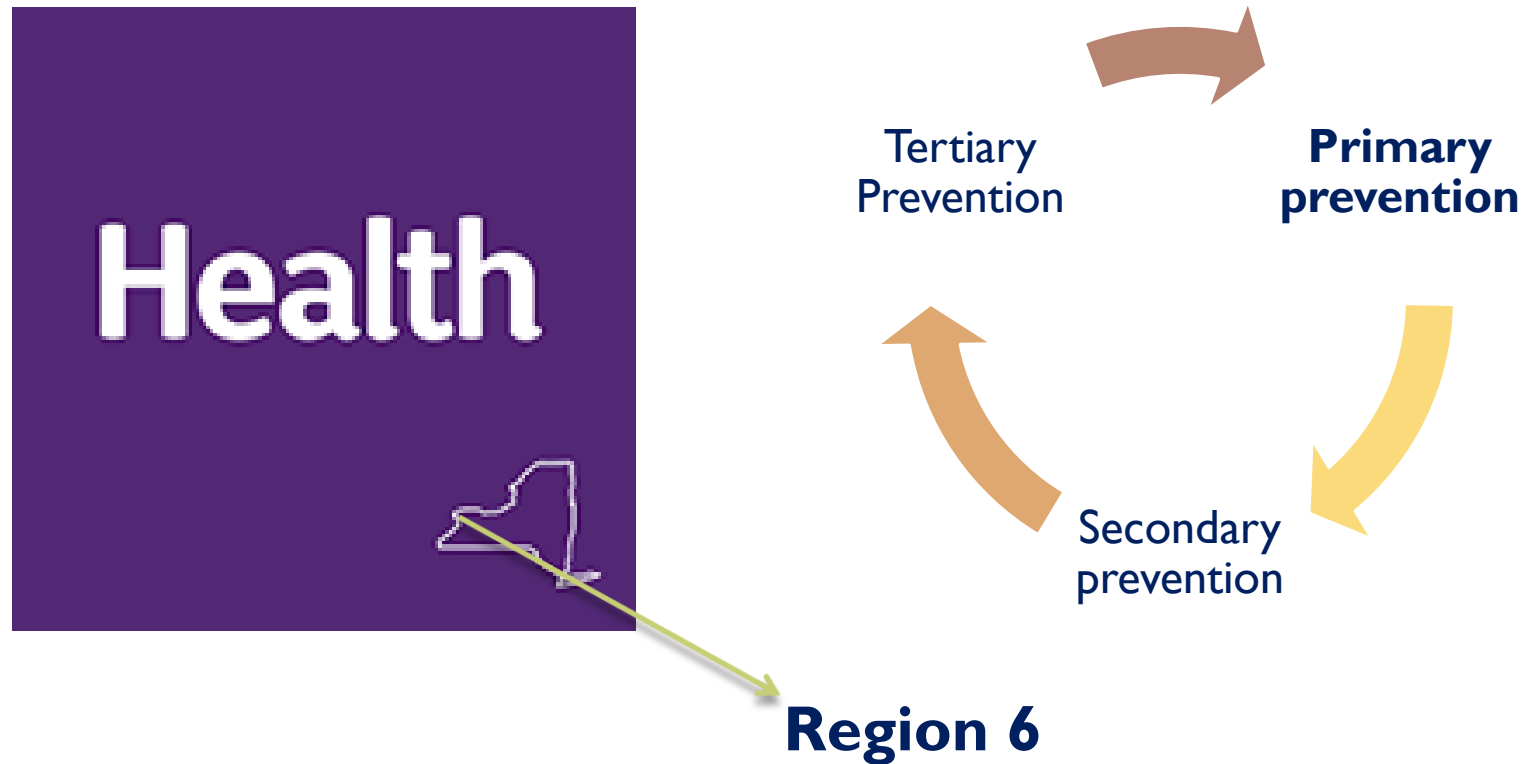
 @YWCAofNiagara

- ▶ Established 1973
- ▶ 5 county program (Monroe, Genesee, Livingston, Orleans and Wyoming)
- ▶ 24 hour coverage
- ▶ 2 hotlines
- ▶ Free
- ▶ Confidential

 @RESTOREsas

 /RESTOREsas

NYSDOH Grant Regional Center for Sexual Violence Prevention



Acknowledgment and Disclaimer Statement

This presentation was supported by funding from Health Research Inc.(HRI) and New York State Department of Health (NYSDOH), Division of Family Health by Cooperative Agreement Number, **UF2CE00243-02**, funded by the Centers for Disease Control and Prevention (CDC). Its contents are solely the responsibility of the authors (Crisis Services, RESTORE Sexual Assault Services and theYWCA of Niagara (Region 6)) and do not necessarily represent the official views of HRI, NYSDOH, CDC or the Department of Health and Human Services.

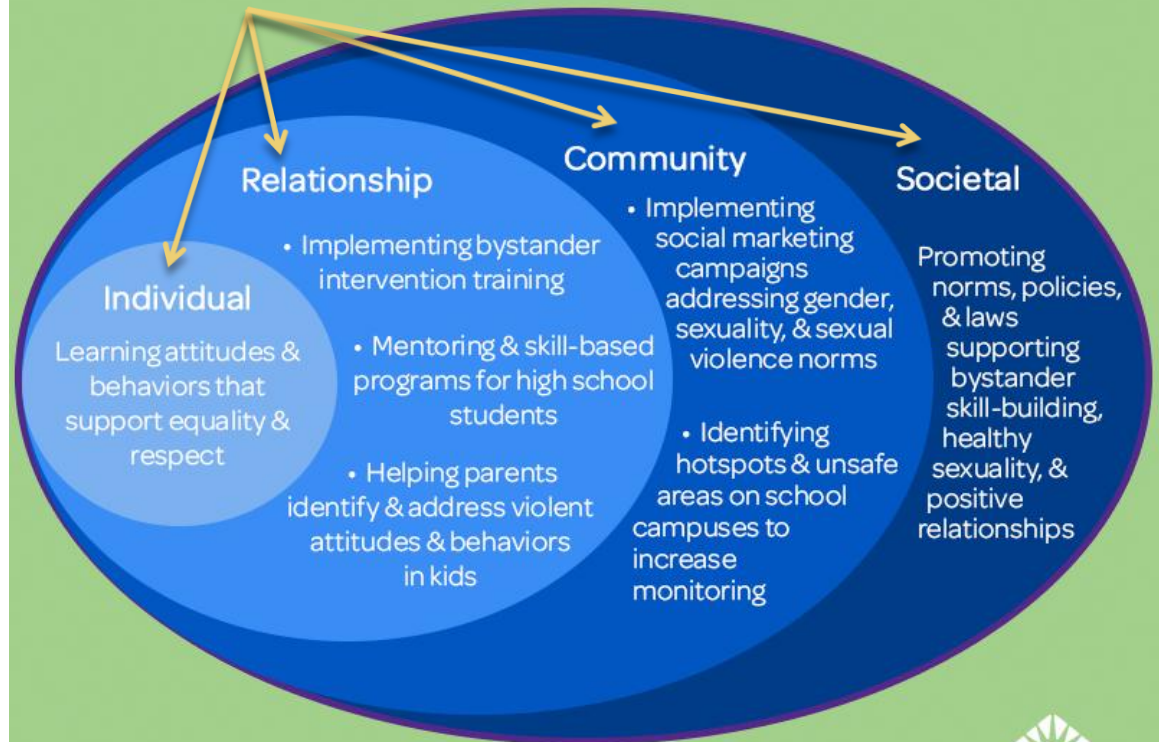


How can our RCC support SUNYs?

- ▶ Postvention is Prevention
- ▶ Work with campuses on every level of the Social Ecological Model
- ▶ Interconnectedness of dating violence, domestic violence, sexual violence, and stalking

Encouraging Work at All Levels Prevents Sexual Violence

Strategies may include:



Learn more about sexual violence prevention from CDC:
<http://www.cdc.gov/violenceprevention/sexualviolence/prevention.html>



VetoViolence

#NOMORE #endsexualviolenceWNY

@Crisis_Services -- @RESTOREsas -- @YWCAofNiagara



**TOGETHER WE CAN END
DOMESTIC VIOLENCE
& SEXUAL ASSAULT**

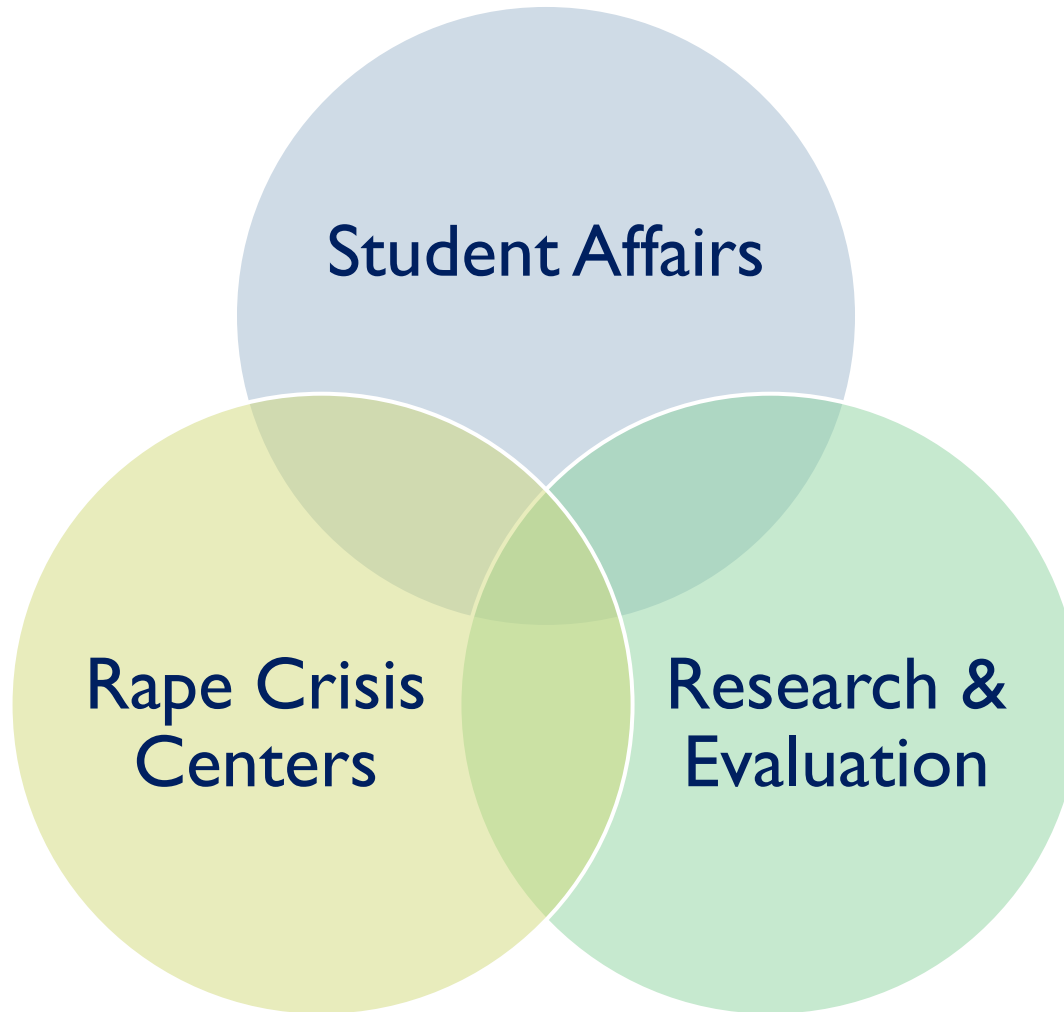
NO MORE



RESTORE your safety net... since 1942



Program Evaluation



Individual, Peer and Community Level Prevention Education and Skill Building

- ▶ Role of our community health educators
- ▶ Prevention, Outreach, Education and Skill Building
- ▶ Bystander Training
- ▶ Staff Training (e.g. with Title IX compliance, RAs, campus security/law enforcement, Orientation)
- ▶ Participate as a campus in our community events and invite us to yours!
 - ▶ E.g. Walk a Mile in Her Shoes

Policy Level Strategies

▶ Building Coalitions

- ▶ Ask RCC to serve on sexual assault prevention, education, response committee/task force

▶ Consult with RCC on language/implementation of policies surrounding sexual assault prevention and response

- ▶ List RCC as a local response option for students reporting/help seeking.

▶ Memorandum of Understanding (MOUs)

Postvention is Prevention

Response Options

- ▶ **Law Enforcement**

- ▶ liaison with detectives/officers

- ▶ **Medical and Hospital Response**

- ▶ **On Going Support**

- ▶ Post case disposition, supportive counseling, lethality monitoring and other needs.

- ▶ **Legal, Conduct/Judicial Options**

- ▶ **Office of Victim Services Claims**



The College at
BROCKPORT
STATE UNIVERSITY OF NEW YORK

RESTORE's partnership with The College at Brockport

Christi Waldron, Staff Counselor, RESTORE



Crisis Services' partnership with the University at Buffalo

Anna Sotelo-Peryea, Public Health Planner
Violence Prevention Specialist

<http://student-affairs.buffalo.edu/public-safety/whattodo.php>



YWCA's partnership with Niagara County Community College

Lisa Babcock, Director of Security, NCCC

Next Steps: Building or Strengthening a Partnership with your RCC

- ▶ Participate in #NOMORE
- ▶ Find your RCC (NYSCASA.org)
- ▶ Invite RCC to your campus prevention and response team and/or conduct process.
- ▶ Include your RCC contact info as an option for a student reporting.
- ▶ Opportunities for training/cross training.
- ▶ MOUs
- ▶ WNY College Consortium
 - ▶ <http://www.wnycollegeconnection.com/saapc>

Q & A

- ▶ Caitlin Powalski – cpowalski@crisisservices.org
- ▶ Robyn Wiktorski-Reynolds – rwr@crisisservices.org
- ▶ Christi Waldron – Christi.Waldron@ppcwny.org
- ▶ Carrie Moylan – cmoylan@binghamton.edu
- ▶ Anna Sotelo-Peryea - acperyea@buffalo.edu
- ▶ Lisa Babcock - Lbabcock@niagaracc.suny.edu